

Fusion Data Intelligence (FDI) – Quick Start Offering For Healthcare

Quick Start Implementation Offering

- Any One Module - 6 Weeks and \$58k; Any 2 Modules Together - 8 Weeks And \$68k
- Activate and Provision Oracle FDI instance(s)
- Create and associate users and groups (IDCS)
- Configure security rules
- Validate Cloud ERP/SCM/HCM/CX parameters for FDI KPI's
- Configure Oracle FDI and data pipeline
- Load FDI; validate KPI's, metrics, reports with Fusion Cloud applications data
- Execute production go-live of FDI
- Training and Knowledge Transition

Add-on Services Available

- Extension of FDI to include EHR data
- New custom KPI's, metrics, reports or dashboards
- Extension of FAW to include additional data sources
- Managed Services and Release Management

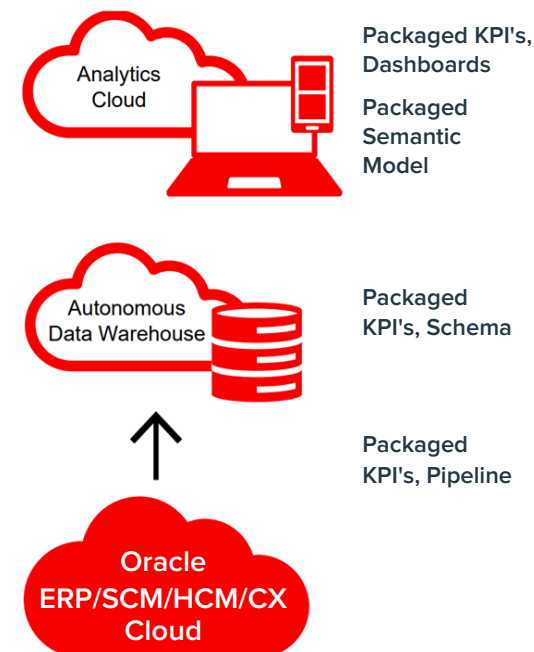
Business Benefits

- Pre-Built Best Practices KPIs
- Pre-Built Dashboards and Reports
- Pre-Built Data Models
- Pre-Built Data Pipeline from Oracle Cloud ERP/SCM/HCM/CX
- Synced with Oracle Cloud release cycles
- Powered by OAC and Oracle ADW
- Enable augmented analytics with AI & ML
- Patient census & admissions focused analytics
- More visibility to payer mix and revenue cycle
- Analyze encounters across demographics & diagnoses

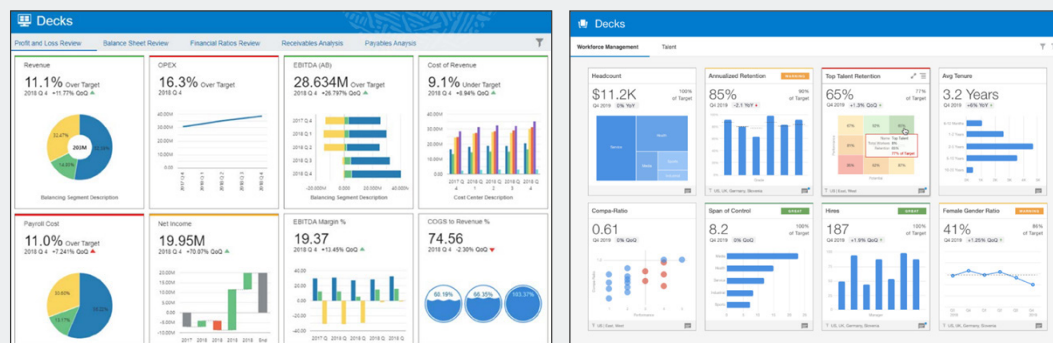
Related Oracle Products

- Fusion Data Intelligence (FDI)
- Autonomous Data Warehouse (ADW)
- Oracle Analytics Cloud (OAC)
- Fusion Cloud ERP/SCM/HCM/CX

Dataflow



Sample FDI Decks and KPIs



Oracle Continually Adds New Content - [Link To Oracle FDI Roadmap](#)

FDI includes the following prebuilt content:

Fusion ERP Analytics

- Finance - GL, AP, AR
- Procurement
- Projects
- 250+ KPI's, Reports/Dashboards

SCM Analytics

- Inventory
- Order Management
- Procurement
- 250+ KPI's, Reports/Dashboards

HCM Analytics

- Talent Management
- Workforce
- Payroll
- 250+ KPI's, Reports/Dashboards

CX Analytics

- Sales
- Marketing
- Service
- 100+ KPI's, Reports/Dashboards

Accounting Hub Analytics

- Analyze non Oracle business activity
- Access to rich, non Oracle detail
- 150+ KPI's, Reports/Dashboards