

Fusion Data Intelligence (FDI) – Quick Start Offering



Quick Start Implementation Offering

- Any One Module - 6 Weeks and \$58k; Any 2 Modules Together - 8 Weeks And \$68k
- Activate and Provision Oracle FDI instance(s)
- Create and associate users and groups (IDCS)
- Configure security rules
- Validate Cloud ERP/SCM/HCM/CX parameters for FDI KPI's
- Configure Oracle FDI and data pipeline
- Load FDI; validate KPI's, metrics, reports with Fusion Cloud applications data
- Execute production go-live of FDI
- Training and Knowledge Transition

Add-on Services Available

- New custom KPI's, metrics, reports or dashboards
- Extension of FDI to include additional data sources
- Managed Services

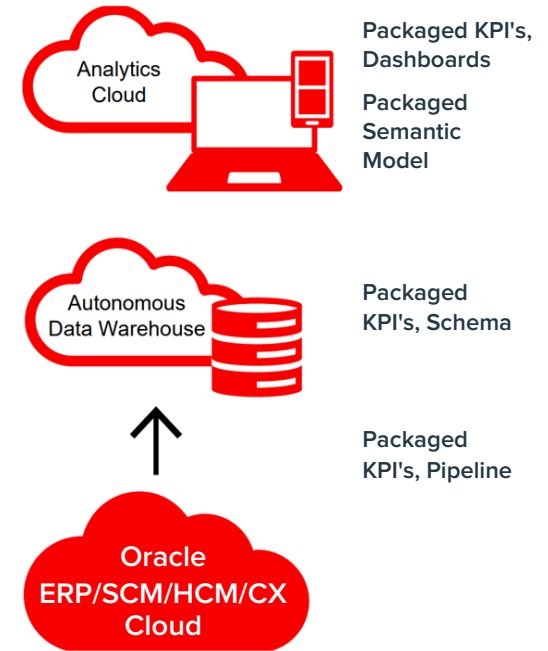
Business Benefits

- Pre-Built Best Practices KPIs
- Pre-Built Dashboards and Reports
- Pre-Built Data Models
- Pre-Built Data Pipeline from Oracle Cloud ERP/SCM/HCM/CX
- Synced with Oracle Cloud release cycles
- Powered by OAC and Oracle ADW
- Enable augmented analytics with AI & ML
- Extensible to other sources

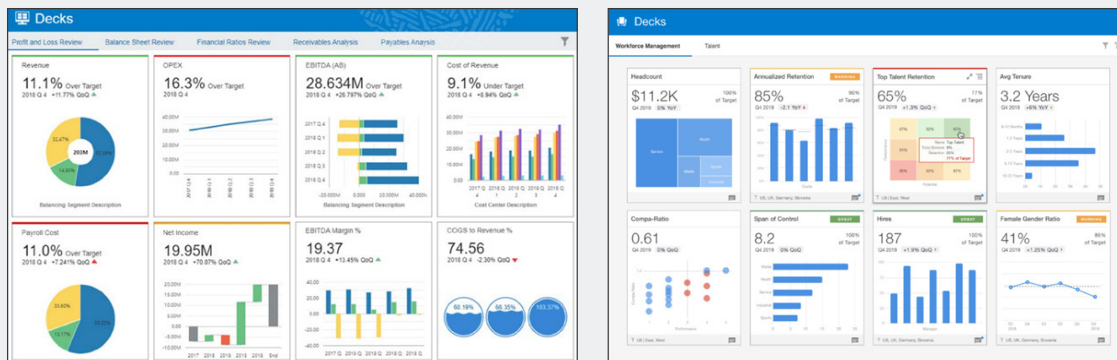
Related Oracle Products

- Fusion Data Intelligence (FDI)
- Autonomous Data Warehouse (ADW)
- Oracle Analytics Cloud (OAC)
- Fusion Cloud ERP/SCM/HCM/CX

Dataflow



Sample FDI Decks and KPIs



FDI includes the following prebuilt content:

Fusion ERP Analytics

- Finance - GL, AP, AR
- Procurement
- Projects
- 250+ KPI's, Reports/Dashboards

SCM Analytics

- Inventory
- Order Management
- Procurement
- 250+ KPI's, Reports/Dashboards

Accounting Hub Analytics

- Add-on SKU to Fusion ERP Analytics
- Enables drill to detail from non-Oracle subledgers
- Prebuilt subject areas, KPI's, Reports/Dashboards

HCM Analytics

- Talent Management
- Workforce
- Payroll
- 250+ KPI's, Reports/Dashboards

CX Analytics

- Sales
- Marketing
- Service
- 100+ KPI's, Reports/Dashboards

Oracle Continually Adds New Content - [Link To Oracle FDI Roadmap](#)

Additional Tiers for FDI Quick Start Offering

FDI Base Offering	Description	1 FDI Module		2 FDI Modules		Benefits
		Timeline (wks)	Cost	Timeline (wks)	Cost	
1. FDI Quick Start	OOTB FDI Module(s)	6	\$ 58,000	8	\$ 68,000	Greater insights, up and running quickly, extensible, efficient
FDI Additional Tiers - FDI Quick Start Plus Additional Scope and Capabilities		Note: Cost shown is total implementation cost - FDI Quick Start plus EBS Historical Data				
2. Loading of EBS Historical data to FDI						
✓ Stand alone - not integrated with Fusion data in FDI	Load historical data from EBS - don't combine with Fusion Data in FDI	11	\$ 134,000	13	\$ 142,000	Enables end user access to EBS data to answer questions, respond to Reg and Tax requests, etc
✓ Integrated with Fusion data in FDI	Load historical data from EBS - combine with Fusion Data in FDI	13	\$ 159,000	14	\$ 170,000	Great for trend reporting across Fusion data in FDI and historical EBS data
3. Integration of 1 External, Ongoing Data Source into FDI		Note: Cost shown is total implementation cost - FDI Quick Start plus 1 External Data Source				
✓ Stand alone - not integrated with Fusion data in FDI	Ongoing integration of an external data source of your choosing on a stand alone basis	11	\$ 123,000	12	\$ 143,000	Expands the usefulness of FDI to incorporate other data sources; streamlines the end user experience for Analytics
✓ Integrated with Fusion data in FDI	Ongoing integration of an external data source of your choosing combined with Fusion data in FDI	14	\$ 150,000	14	\$ 173,000	Enables integrated analysis of Fusion and non Fusion data; drives better and more efficient decision-making
4. Predefined bucket of custom reports and/or DFF'S		Note: Timeline and Cost shown are incremental to FDI Quick Start - add timeline and cost to FDI Quick Start - Options are additive				
✓ 5 High Complexity reports	Develop 5 high complexity reports using OOTB data -examples include but are not limited to Balance Sheet, P&L, etc	2.5	\$ 22,000	2.5	\$ 22,000	Aligns FDI to support the most complex reports of the organization; extends FDI and increases user adoption
✓ 10 Medium complexity reports	Develop 10 medium complexity reports using OOTB data and subject areas	2	\$ 18,000	2	\$ 18,000	Enables end users to define the look and feel of their most important reports; increases user adoption
✓ 5-10 DFF's loaded into FDI	Update data pipeline to load 5-10 Descriptive Flexfields (DFF's) into FDI. Update FDI subject areas to include DFF's for reporting	1.25	\$ 4,980	2.5	\$ 9,960	Descriptive Flexfields (DFF's) defined in Cloud Fusion Apps often have reporting value; enables more targeted and customized reporting for the organization
✓ 10-20 DFF's loaded into FDI	Update data pipeline to load 10-20 Descriptive Flexfields (DFF's) into FDI. Update FDI subject areas to include DFF's for reporting	2.25	\$ 8,964	4.5	\$ 17,928	
✓ 20-30 DFF's loaded into FDI	Update data pipeline to load 10-20 Descriptive Flexfields (DFF's) into FDI. Update FDI subject areas to include DFF's for reporting	4	\$ 16,135	8	\$ 32,270	